

BEND OF ISLANDS CONSERVATION ASSOCIATION NEWSLETTER

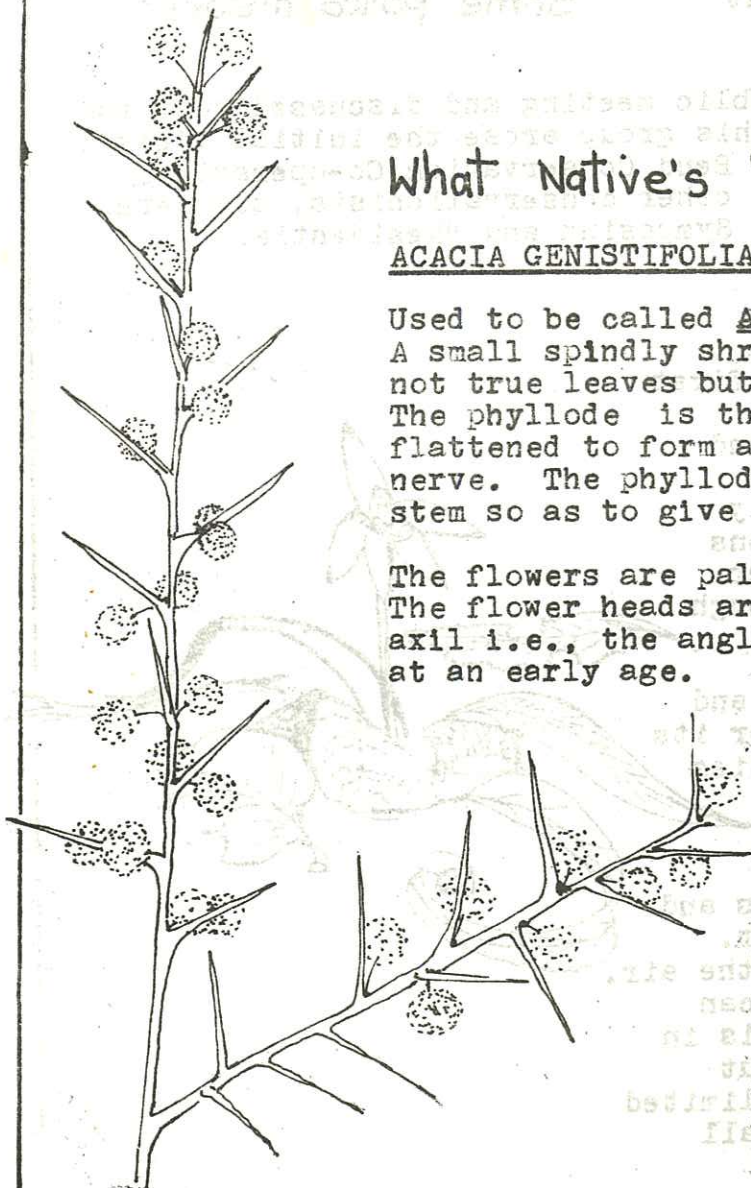
NO 2. AUGUST 1979

What Native's Flowering?

ACACIA GENISTIFOLIA

Used to be called Acacia diffusa. Common name is Spreading Wattle. A small spindly shrub 1 to 1.5 metres high. The thorn-like leaves are not true leaves but are called phyllodes which function like leaves. The phyllode is the leaf stalk of the feathery seedling leaf which has flattened to form a narrow stiff pointed spine with a raised central nerve. The phyllodes are 2 to 5 c.m. long and are wide apart along the stem so as to give this irregular-branched shrub an open appearance.

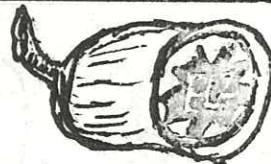
The flowers are pale yellow balls which appear in winter to spring. The flower heads are on short stems in twos and threes and come from the axil i.e., the angle formed by the leaf in relation to the stem. Flowers at an early age. Occurs naturally in our Box and Stringybark forest and found along roadsides. Prefers good drainage, in an open and dry situation.



Bushwalks

On Sunday mornings, a number of women in the area meet at 9 a.m., and go for a ramble through the bush. Children often go too. They end with a cup of tea, and are as much a social gathering as exercise, taken through beautiful surroundings and a chance to appreciate so much more of our bushland. We welcome new walkers and to find out the venue for the week's walk, contact Cric (7120 251), or Jenny (7120 355) or Eilish (7120 435).

Environmental Living Zone in a Nutshell



"Can native bushland support a low density human population without being grossly altered or disturbed?"

Some potted History:

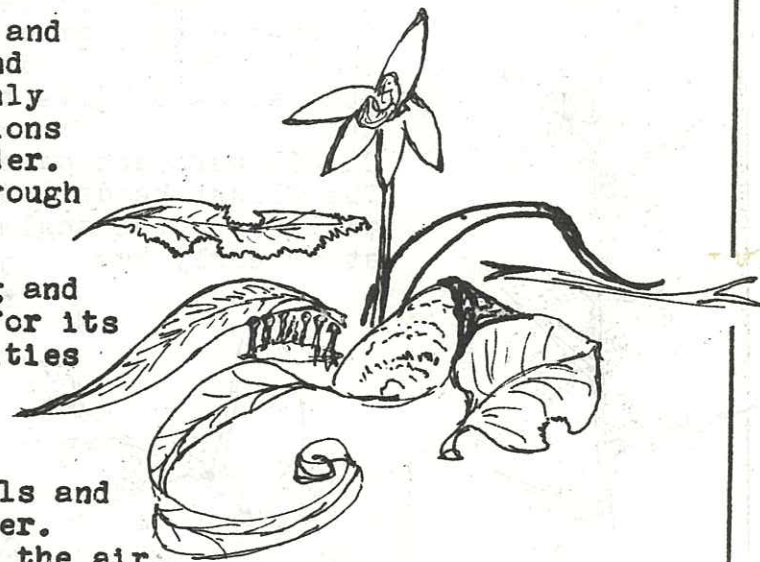
In the mid 1960's local residents of the Bend of Islands held a public meeting and discussed just that! The Bend of Islands Conservation Association was born and out of this group arose the initial ideas and plans for both the Environmental Living Zone and the Round the Bend Conservation Co-operative. Much later, in 1974, this same question stimulated the interest of other conservationists, planners, politicians and residents at an Australian Conservation Foundation Symposium and "Residential Conservation" was recognized as an answer!

The Bend of Islands, a distinctive area with largely intact native ecosystems, and threatened by urban expansion, was chosen for the first ever experiment under this type of planning with the new name of "Environmental Living". The M.M.B.W., Ministries for Planning and Conservation, the Shire of Healesville, the Upper Yarra Valley and Dandenong Ranges Authority and local residents have all been keenly involved in the drafting of the Environmental Living Zone conditions which are incorporated in the Shire's new Interim Development Order. This I.D.O (similar to a Planning Scheme) is currently going through the planning processes.

The Environmental Living Zone is a bold new direction in planning and has attracted world interest both for its innovative nature and for its potential as a planning scheme for all sorts of groups or communities with a common interest.

Ecology:

Any section of bushland is an ecosystem. In it, vegetation, animals and features interact with each other and are influenced by the weather. Plants use energy from the sun and oxygen and carbon dioxide from the air. Animals and bacteria produce nitrates, the concentration of which can significantly affect the growth of certain plants. As the system is in a balanced state, only limited disturbances can be tolerated without causing serious changes to that balance. For example, removal of limited quantities of trees or animals, or the growing of certain crops, fall into this category of "disturbance".



Ecology Cont:

antilidiano

The Bend of Islands is a distinctive ecosystem of natural bushland which has remained in its native state despite its proximity to the city. The aqueduct to the north, Watson's Creek to the west, and the Yarra to the south, form a moat with only a single road in and out. This defence system has restricted shooters, dogs, cats and weeds and other deleterious influences. The soil is deficient in nitrates and phosphates in which the native flora flourishes and thus dominates over foreign plants. However, careless disposal of nutrient-rich effluent would alter this.

It is vital that this area remain in its present state as it is the last substantial red box forest close to Melbourne. It has abundant kangaroos, wallabies, tuans, gliders, possums, wombats and many native birds. Their survival is dependent upon the ecological balance in the area being maintained. As some of the birds are ground-nesting and many of the young animals very defenceless, it is essential that dogs and cats should not be allowed to roam in the area. Excreta from cattle and horses (and humans) contains nitrates which would help non-indigenous plants to become established and eventually dominant, thus destroying habitats for flora and fauna.

Land-use Restraints & E.L.Z. Regulations:

To achieve this ecological objective and to ensure that the visual beauty of the area is not spoiled, the E.L.Z. provisions include the following:-



- * Restrictions are placed on what the land can be used for and include prohibition of the keeping of dogs, cats, horses and donkeys.
- * The only livestock which may be kept are those able to be penned in a limited area (500 sq. metres).
- * Kitchen gardens may be of limited size only (1000 sq. metres).
- * Houses must be sited and constructed so as to visually blend with the environment whilst not interfering unduly with the ecosystem. The colour of houses is controlled to the extent that external cladding and roofs must be of muted tonings and blend with surroundings.
- * Consideration of the fire hazard in the area including the requirement to control ground debris which provides fire fuel.
- * Controls upon the treatment of sullage and septic effluent with emphasis on its impact on the environment.

4. If, however, residents were using the land in any of the above ways (contrary to the above requirements) before the provisions were introduced, they may continue to do so, under an "existing use" provision.

These are just some of the provisions. For full details please look at the Shire of Healesville's new I.D.O., at the ELZ section, pages 52 to 57.

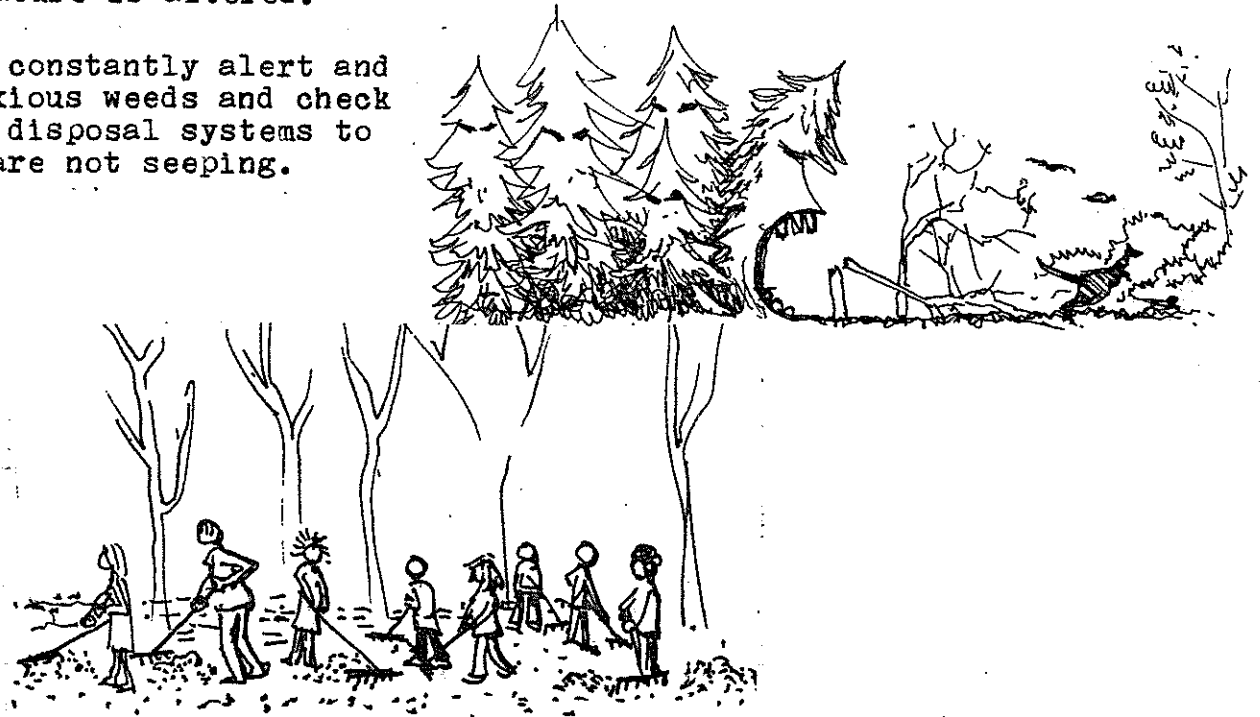
Resident Responsibilities:

As in any community, residents do have responsibilities. Residents living in the area should constantly examine their own personal objectives in terms of their affect upon the ecosystem! If, for instance, residents wish to attract honeyeaters by growing grevillias or other Australian natives, then thought should be given as to whether these could spread. Perhaps to avoid this it is safer to plant only species native to the Yarra Valley. Residents should also be aware that Pine trees drastically alter the ecosystem. They spread quickly and prevent the growth of indigenous species. The birds and animals which obtain food and shelter from the bush, find neither in Pine trees. Thus pines reduce their habitats and in turn the balance of nature is altered.

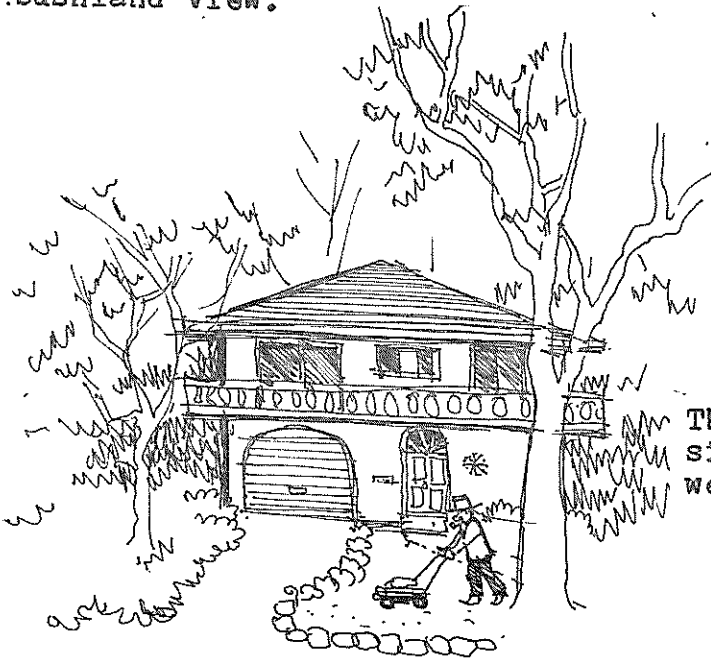


We should be constantly alert and eradicate noxious weeds and check our effluent disposal systems to ensure they are not seeping.

Residents should reduce ground fuel (forest litter) by raking, composting and cool burning, thereby reducing the risk of serious fires.

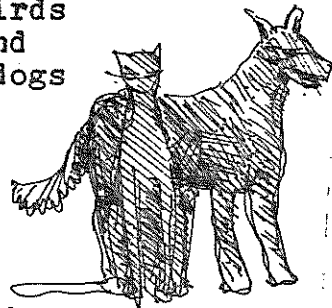


Each of us should ensure that our homes blend with the environment! Remembering that whatever we do, might affect someone else. For instance, a shiny roof protruding out of the forest could ruin another resident's bushland view.

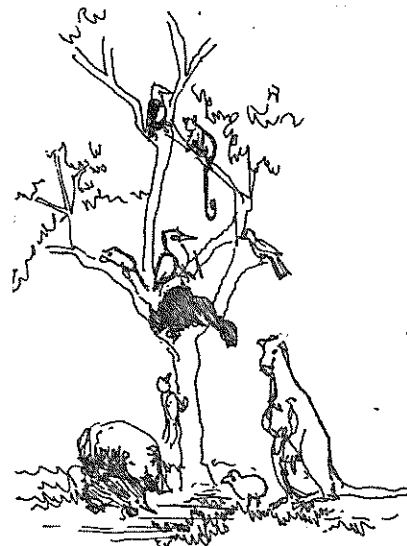


BRISTLING

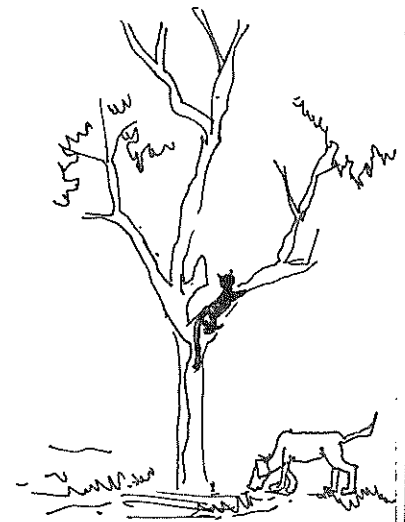
So that our native animals and birds can live free from harrassment and death we should ensure that our dogs and cats are not free to roam.



+

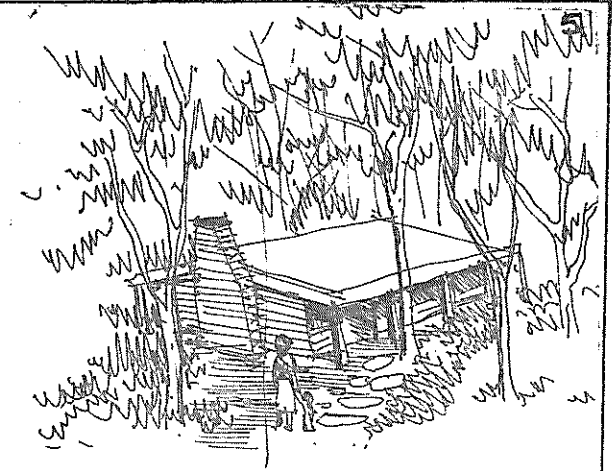


=



The Association has fought to ensure that development on the Lillydale side of the river does not ruin the environment or our views, but, do we look so good ourselves from the their side of the river?

BLENDING .



Only in these ways will the area remain natural and residential occupancy of it be justified. It could even be beneficial to the area to have residents, provided their actions are in harmony with the ecosystem.

6.

The Bend of Islands Conservation Association has a membership of 150 and an elected committee of 12. It is active in fostering care of and concern for the local environment. Conservation forms a bond between residents whose other interests may be quite different. Out of mutual interest other community activities have developed, including a renewed participation in the local fire brigade, a food co-operative involving 30 households, a toddlers play group, a baby-sitting club and running, walking and yoga groups. Currently being explored, is the possibility of community transport.

The future of the Bend of Islands is dependent on what happens within the Environmental Living Zone and also by what occurs in surrounding areas. Immediately adjacent areas should have complementary regulations to act as buffer zones. The zone itself should be extended to its natural physiographic boundaries rather than be defined by arbitrary lines on maps. For instance, run-off water from adjacent land in Henley Road at Watson's Creek outside the zone, flows into it. Therefore, it is sensible that provision be made for run-off to be controlled by ELZ-type conditions. Flora and fauna do not understand boundaries drawn on maps but are to varying extents contained by physiographic boundaries.

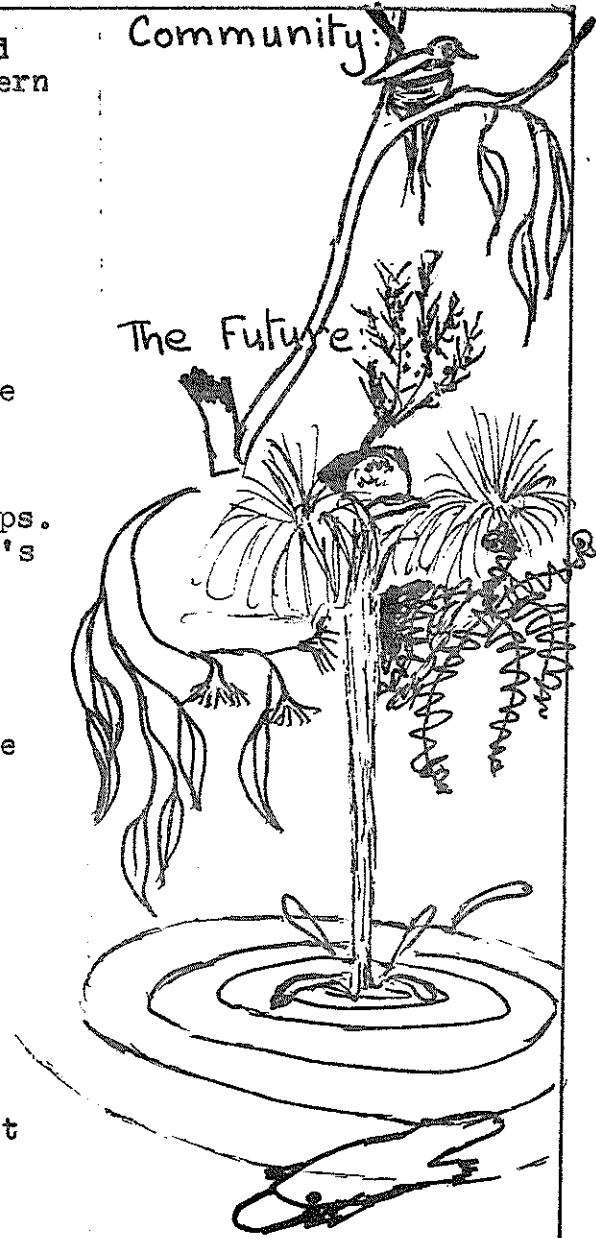
Residents of the Environmental Living Zone must be ever-watchful over the activities of service bodies such as the SEC, Telecom, the C.R.B., and Shire road-makers, to ensure that their work is carried out sensitively. They must be aware of sub-division proposals and planning changes which might jeopardize the area. For example, the details of the planning of a sub-division taking place on the Lilydale side of the Yarra, is being influenced both by the possible visual affect upon the area and environmental factors relating to the river itself.

The Environmental Living Zone provisions under the Interim Development Order are there to safeguard our area but even so, the future is very much what we, the residents and land owners, make it! If we do not act responsibly in the way we use our land, then we will adversely affect the environment! If we do not act responsibly in the way we build our homes, then we will destroy the visual beauty of our area and thus eventually we will lose the very things most of us came here to enjoy.

The beauty of the Bend of Islands and the survival of its forest, flowers, birds and animals, is very much in our own hands!

Community:

The Future:



Ronald Farren-Price Piano Recital.

A RARE OPPORTUNITY TO HEAR THE MUSIC

OF THIS WORLD-ACCLAIMED AUSTRALIAN PIANIST! Come along to Tim and Raya Ealey's home in Skyline Road, on Saturday 29th September at 7.45 p.m. and take part in what promises to a delightful community musical experience! Tickets are \$5 per person from Raya (7120 347) and please R.S.V.P. by 30th August.

Antechinus Stuarti (Native Marsupial)

Sometimes called Brown Hopping Mouse, is rather like an introduced house mouse in appearance but larger (approx. 3 times). His head is pointed, like a bandicoot's, his mouth is full of teeth, and his ears are square shaped.

They move around darting, hopping, stopping, starting, differently to an introduced mouse. They are so active in fact, they can run upside down under the exposed rafters of your house. If you haven't seen the acrobat, he is timid, and shy of predators, both native and introduced. Or it might be that you have no exposed rafters.

Antechinus eats honey and insects. They have been known to eat the common house mouse (pest) (our ecological mouse eradicator).

Mating in autumn, the mature females have their young in winter, by that time the males that have mated have died leaving the only males (baby ones) in the pouch. Although this is usually the case, university studies withheld some mature males from mating, and found they survived to live for yet another year (gentlemen take note!).

Christmas Hills Hall , Sept. 9th.

MOON DANCE BAND ROBBIE GRIEG COOL WATER other musicians.

PLUS: Poets ... films ... food etc. Bring a cushion.

Donation: \$2.50.



B. Recycling Wastes.

There are many recycling depots or collection centres available to us, where we can dispose of recyclable wastes such as paper, glass, scrap metal, aluminium cans and clothes. It is important to recycle wastes where we can. Recycling conserves energy and helps protect our environment.

It should be pointed out that plastics cannot be recycled. It should be stressed that plastics should not be incinerated, some give off toxic fumes, some acid fumes and others give off a thick black smoke. The only safe disposal of plastics, as with other wastes which cannot be recycled is the tip. In our last newsletter we listed some local recycling depots for paper and glass. Here are some major collection centres near us.

WASTE PAPER: (Total of 8 centres in Melbourne).

Fairfield Paper Mill, 626 Heidleberg Road, Fairfield.
Victorian Recycling Depot, 54 Raglan St., Preston.
Springvale Recycling Depot, 46 Queens Avenue, Springvale.

GLASS: (Total of 118 Centres in Melbourne)

Amoco, Cnr. Thompsons Rd., & Manningham Rd., Bulleen.
Shell, Cnr. Doncaster Rd., and High Street, Doncaster.
Caltex, 358 Heidleberg Rd., Fairfield.
Amoco, 107 Bell St., Heidleberg.

METALS:

Simsmetal (Aust). Pty. Ltd.

ALUMINIUM CANS: (Total of 21 Centres in Melbourne).

Reitman Aust. Pty. Ltd., 17 Bell St., Preston.

RAGS:

St. Johns Ambulance Brigade.
Brotherhood of St. Lawrence (Bin in Safeway Car Park-Eltham.)
Salvation Army.
St. Vincent De Paul Society.

Notice of General Meeting:

A General Meeting will be held on Sunday September 16th at 2 p.m. at the home of Tim and Raya Ealey. Bring plate, mug and seat. The theme will be wildflowers.

1. Apologies
2. Minutes
3. General Business
4. Wildflower talk by guest speaker.
5. Walk led by Hazel Rich.

The meeting will start at 2 p.m. SHARP! So please be on time so we can enjoy an unhurried walk before dark.

The following examples give an idea of some of the work being done by them. Land Transactions Committee exists to gather a list of potential buyers sympathetic to conservation ideals and to inform these buyers of available land. Your contacts are Felicity Faris (7120 422) and Raya Ealey (7120 347) or Neil Douglas (7120 352).

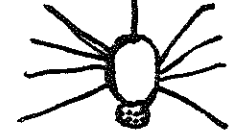
Fire Policy Group - next newsletter we will focus on this area.

Several groups covering semi-Government authorities, e.g., S.E.C., Shire, Telecom etc.

President	Rod Shield	7120 396
Vice President	Roger Nink	7197 426
Secretary	Felicity Faris	7120 422
Treasurer	Michael Pelling	7120 286
Min. Secretary	Zara Sarandis	7120 395
Ian Leach		
Cric Henry		
Peter Re		
Peter Wilson		
Ray Howell		
Raya Ealey		
Tony Judge		
Mal McClure (Honorary Member)		

There are a number of sub-committees, formed to co-ordinate and gather information on a wide range of relevant and local matters.

9.
Agenda:



Bend of Islands
Conservation
Association (B.I.C.A)
Committee:



10. Our sub-committees at work

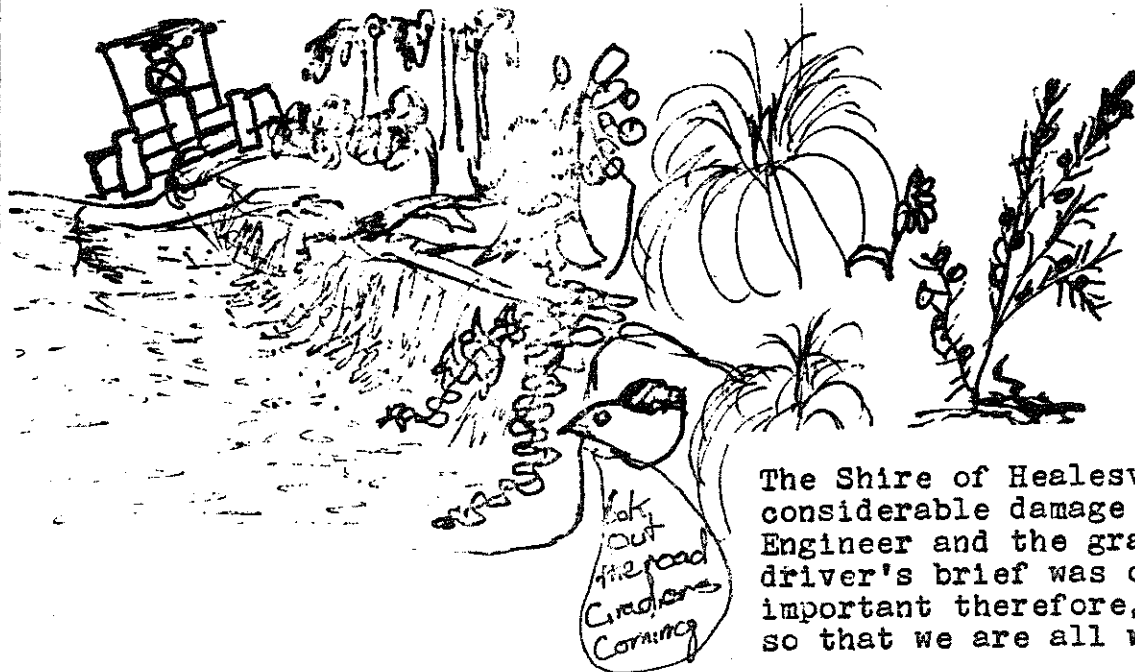
S. E. C.

The power line to Hill's Sub-division (end of Henley Road). B.I.C.A and the Co-op have had on site meetings with the S.E.C., so that the line planning will have minimal impact. An eye will be kept on the work when it proceeds.

Over the last month we have had SEC maintenance workers clearing vegetation away from the power lines. Unfortunately in a few areas there has been considerable damage

- * clearing of shrubs which will never reach the power lines.
- * damage to ground vegetation by access vehicles.
- * clearing of dead limbs which harbour native animals and birds.

Our aim is to minimize vegetation clearance. It is important to establish with the maintenance workers the extent to which clearance is adequate for SEC purposes whilst maintaining the integrity of the bush as far as possible. A meeting with them was held for this purpose. The Ministry for Conservation has inspected the work and is also negotiating with the SEC to formulate proper guidelines for maintenance.



Road grading

The Shire of Healesville's road grading recently, led to considerable damage on the margins of the road. Pleas to the Shire Engineer and the grader driver resulted in an awareness that the driver's brief was open to a wide range of interpretation. It is important therefore, that we continue to stress our point of view so that we are all working towards the same goal more effectively.



The watch dog committee is liaising with Telecom to ensure minimal damage when they upgrade existing and install new lines. The Shire Engineer has in fact written to Telecom strongly urging them to follow the same route as the S.E.C. on Henley Road, when the time comes. The Ministry for Conservation are also watching progress.

Telecom

For Sale

For Sale

M.M.B.W. Land Sales

The many land-ownings of the MMBW in the area, and their plan to sell off poses a problem and a lot of work for the Land Transactions Committee to find suitable buyers.

There has been close liason of the B.I.C.A Committee with Healesville Shire on the matter to ensure land sales impact is minimized. To date, the MMBW has applied for a number of planning permits and the Shire has refused some of these on environmental grounds. In some cases it requires certain conditions and provisos to be met. The remainder of MMBW lots presumably will be sold after these. Close liason is planned between BICA and the agents selling the land.

Gongflers Drive Peninsular

The B.I.C.A committee is recommending to the appropriate authorities that 5 separate lots held by the MMBW totalling 20 acres, be handed over to either National Parks or the Ministry for Conservation to create a flora and fauna reserve which would act as a reference zone.

Interim Development Order (I. D. O.)

The B.I.C.A secretary and two committee members attended a special Shire meeting dealing with the I.D.O. recently, at which a number of amendments were put. This group is liaising closely with Council during the processing of the IDO.

Bissett - Johnson Land.
The Association is grateful that the Government has negotiated ^{to buy} the strip of land bordering the river on the Lilydale side of the Yarra. (It runs opposite E.L.Z.) This stretch of steeply forested land is now saved with the help of Lilydale Shire Ministry for Conservation & particular thanks to Neil Douglas, & Felicity Faris, & John Lawson of the Ministry, & Mr Bissett-Johnson for making the land available.



2. Food Co-operative:

Next meeting will be held on Wednesday 29th August, at Dee and Michael Pelling's home in Henley Rd., at 8 p.m. **ALL ORDERS MUST BE IN ON THAT NIGHT OR MISS OUT!** If you cannot make it to the meeting, either pick up an order form from Dee's and lodge it there **BEFORE 8 p.m.** on the 29th, or else phone in the order. Bring Cheque Books. **FOOD PICK UP WILL BE SATURDAY 15th SEPTEMBER** between 11 a.m. and 2 p.m.

K.G. Film Society:

Ian Toohil, a teacher from the K.G. Primary School, is organizing a Film Society. Phone: 7120 292. He is looking for a small group to help set it up and maintain impetus in the running of it. Membership costs calculated on the basis of 50 adult members and 40 children will be:

<u>ADULT SECTION:</u>	Family	\$20
	Individual	\$10
<u>CHILDRENS' SECTION:</u>	Family	\$10

There would be one showing per month for each section i.e., fortnightly screenings alternating adult and childrens' films.

Book Review:

"LIVING SHELTER" - Handmade Houses in Australia. By Peter Re, Tony Miller and Pam McKay.

After two years waiting for publishing since the book was prepared, it has been well worth it! It lets your dreams loose! This book is not a "how to do it" manual, but provides delightful inspiration for people to trust their own sense of taste and design in creating their own homes. There is warmth and serenity created by the care and love with which these homes were built, by the disregard for convention and magnificent awareness of the beauty of colour, light, texture and natural surrounds.



Twins!

We warmly welcome Lucy & Sarah Vincent born to Jane & Dave.

Bend of Islands Conservation Association Subscription:

I enclose \$..... (\$5 per person) for 1979 membership of B.I.C.A. for the following persons: (please include addresses and phone numbers).

Names.....
.....
.....

Food Cooperative

Next meeting will be held on Wednesday, Sept. 23rd at 8 p.m. in the hall at 1234 Main St. All members must be in on time. If you cannot come to the meeting, either give an order to the Food Co-op or have someone else do it. If you are unable to do this, please call the Food Co-op at 1234 Main St. between 10 a.m. and 2 p.m.



K. Film Society

The K. Film Society will be holding a meeting on Thursday, Sept. 24th at 8 p.m. in the hall at 1234 Main St. The meeting will be held in the hall at 1234 Main St. between 10 a.m. and 2 p.m.

Meeting on Thursday, Sept. 24th at 8 p.m. in the hall at 1234 Main St. The meeting will be held in the hall at 1234 Main St. between 10 a.m. and 2 p.m.

The Food Co-op is a non-profit organization that provides fresh, locally sourced food to its members. We are currently looking for new members and are holding a meeting on Wednesday, Sept. 23rd at 8 p.m. in the hall at 1234 Main St. All members must be in on time. If you cannot come to the meeting, either give an order to the Food Co-op or have someone else do it. If you are unable to do this, please call the Food Co-op at 1234 Main St. between 10 a.m. and 2 p.m.

The K. Film Society is a non-profit organization that provides film screenings to its members. We are currently looking for new members and are holding a meeting on Thursday, Sept. 24th at 8 p.m. in the hall at 1234 Main St. The meeting will be held in the hall at 1234 Main St. between 10 a.m. and 2 p.m.